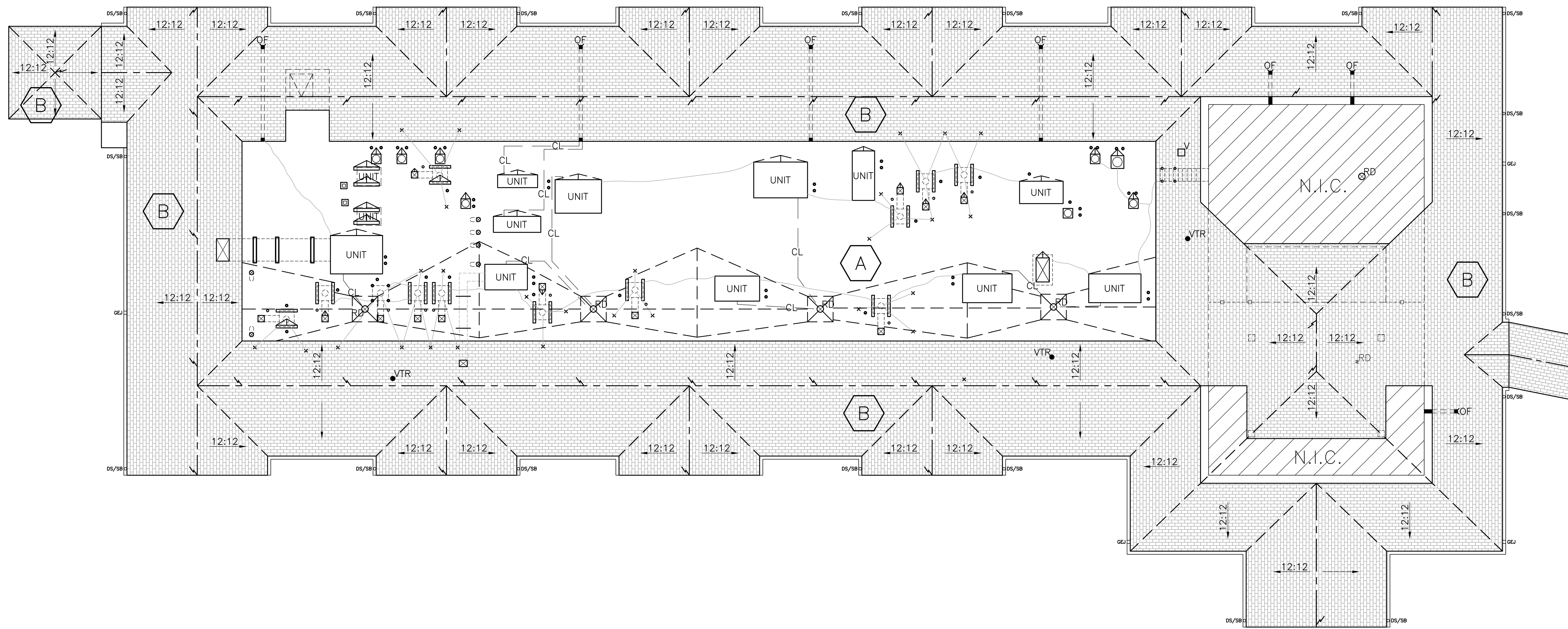
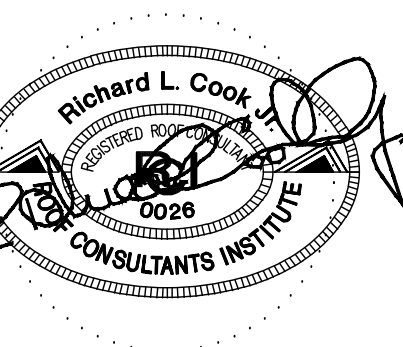
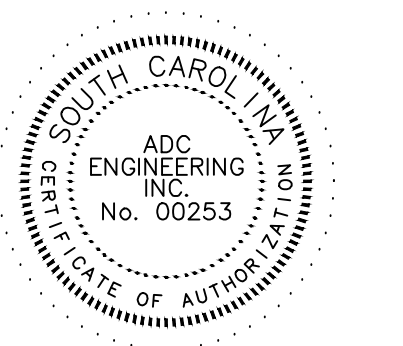


LS3P ASSOCIATES LTD.  
701-A LADY STREET COLUMBIA SC 29201  
TEL. 803.765.2418 FAX 803.765.2419  
WWW.LS3P.COM



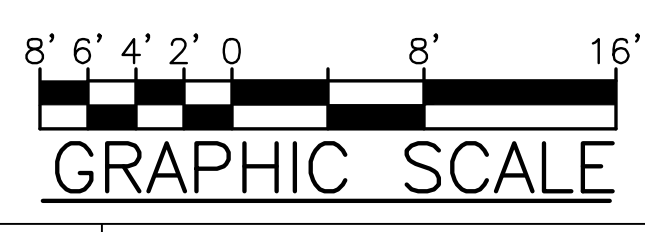
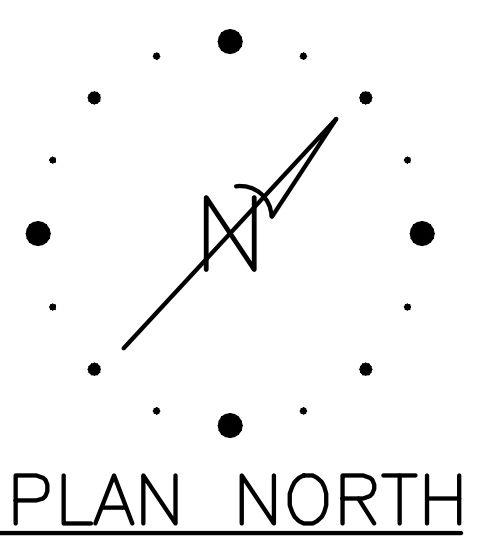
ADC ENGINEERING SPECIALISTS  
SITE SERVICES \ BUILDING ENVELOPE \ STRUCTURAL  
1226 YEAMANS HALL ROAD  
COLUMBIA, SC 29210  
843-564-0161  
FAX 843-564-0162  
ADCENGINEERING.COM



**TAPERED INSULATION NOTES**

1. AS NOTED IN SECTION 07 22 05 ROOF INSULATION, THE PRIMARY SLOPE FOR INDICATED ROOF AREAS SHALL BE PROVIDED WITH TAPERED INSULATION AT 1/8" PER FOOT.
2. SECONDARY SLOPE (CRICKETS, SADDLES, SUMPS) SHALL PROVIDE A FINISHED SLOPE OF NOT LESS THAN 1/4":1'.
3. ALL PENETRATIONS/TERMINATIONS SHALL BE RAISED TO PROVIDE MINIMUM 8" BASE FLASHING HEIGHT.
4. INSULATION THICKNESSES SHALL BE COORDINATED WITH AND MATCH NAILER THICKNESSES AND ADJACENT INSULATION THICKNESSES WITHIN A 1/4" TOLERANCE IN ALL DIRECTIONS.
5. AT DRAINAGE LOCATIONS ENSURE INSULATION TAPERS UP FROM DRAIN A MINIMUM 1/4":1' AND A MAXIMUM 1":1'. PROVIDE TAPERED FILLER TO MATCH FIELD INSULATION THICKNESSES.
6. PROVIDE A TAPERED CRICKET ON THE HIGH SIDE OF ALL NON-ROUND PENETRATIONS WIDER THAN 24".
7. KEEP CRICKET VALLEYS A MINIMUM OF 12" AWAY FROM ALL PENETRATIONS TO ALLOW DRAINAGE.

**TAPER ROOF PLAN**



REVISIONS:

No.	Description	Date

MEMBERS OF THE AMERICAN INSTITUTE OF ARCHITECTS  
COPYRIGHT ALL RIGHTS RESERVED  
PRINTED OR ELECTRONIC DRAWINGS AND DOCUMENTATION MAY NOT BE REPRODUCED IN ANY FORM WITHOUT WRITTEN PERMISSION FROM LS3P ASSOCIATES LTD.  
PROJECT: 2202-116350  
DATE: 09/11/2012

**R-105**



